

GORDON COUNTY, GEORGIA

LOCAL OPTION AND SPECIAL PURPOSE SALES TAX COLLECTIONS

MARCH 31, 2018

GORDON COUNTY, GEORGIA
F/Y 2017 AND 2018 SALES TAX COLLECTIONS

LOCAL OPTIONS SALES TAX

		LOST + TAVT. LOST		47%		LOST + TAVT. LOST		INCREASE (DECREASE)	PERCENT
		+ ENERGY EXCISE		LOST	TAVT-LOST	ENERGY EXCISE	+ ENERGY EXCISE		
		2016-17	2017-18	2017-18	2017-18	2017-18	2017-18		
AUGUST	1	\$ 472,823.91	\$ 491,600.43	\$ 10,140.80	\$ 25,661.22	\$ 527,402.45	\$ 54,578.54	11.54%	
SEPTEMBER	2	481,385.26	467,395.87	26,279.19	24,884.22	518,559.28	37,174.02	7.72%	
OCTOBER	3	442,186.67	484,150.21	30,382.60	24,618.04	539,150.85	96,964.18	21.93%	
NOVEMBER	4	483,345.31	431,845.44	22,070.17	23,799.04	477,714.65	(5,630.66)	-1.16%	
DECEMBER	5	497,650.39	479,292.83	14,724.90	23,180.57	517,198.30	19,547.91	3.93%	
JANUARY	6	596,210.20	541,037.58	20,537.20	21,395.51	582,970.29	(13,239.91)	-2.22%	
FEBRUARY	7	474,742.85	461,224.54	12,619.80	24,088.31	497,932.65	23,189.80	4.88%	
MARCH	8	441,915.12	401,768.10	49,581.18	23,692.49	475,041.77	33,126.65	7.50%	
APRIL	9					-			
MAY	10					-			
JUNE	11					-			
JULY	12					-			
YEAR TO DATE		<u>\$ 3,890,259.71</u>	<u>\$ 3,758,315.00</u>	<u>\$ 186,335.84</u>	<u>\$ 191,319.40</u>	<u>\$ 4,135,970.24</u>	<u>\$ 245,710.53</u>	<u>6.32%</u>	

SPECIAL PURPOSE LOCAL OPTION SALES TAX

		SPLOST + TAVT SPLOST		53%		SPLOST + TAVT SPLOST		INCREASE (DECREASE)	PERCENT
		+ENERGY EXCISE		SPLOST	TAVT-SPLOST	ENERGY EXCISE	+ENERGY EXCISE		
		2016-17	2017-18	2017-18	2017-18	2017-18	2017-18		
AUGUST	1	\$ 671,456.10	\$ 708,863.01	\$ 11,603.09	\$ 28,937.12	\$ 749,403.22	\$ 77,947.12	11.61%	
SEPTEMBER	2	681,206.39	673,966.02	30,068.56	28,060.92	732,095.50	50,889.11	7.47%	
OCTOBER	3	623,016.87	698,124.08	34,763.67	27,760.77	760,648.52	137,631.65	22.09%	
NOVEMBER	4	686,078.41	622,702.51	25,252.62	26,837.21	674,792.34	(11,286.07)	-1.65%	
DECEMBER	5	706,420.02	691,109.57	16,848.19	26,139.79	734,097.55	27,677.53	3.92%	
JANUARY	6	833,477.29	780,117.49	23,498.61	24,126.85	827,742.95	(5,734.34)	-0.69%	
FEBRUARY	7	667,847.22	665,066.93	14,439.55	27,163.41	706,669.89	38,822.67	5.81%	
MARCH	8	629,413.14	579,333.60	56,730.62	26,717.07	662,781.29	33,368.15	5.30%	
APRIL	9					-			
MAY	10					-			
JUNE	11					-			
JULY	12					-			
YEAR TO DATE		<u>\$ 5,498,915.44</u>	<u>\$ 5,419,283.21</u>	<u>\$ 213,204.91</u>	<u>\$ 215,743.14</u>	<u>\$ 5,848,231.26</u>	<u>\$ 349,315.82</u>	<u>6.35%</u>	

GORDON COUNTY, GEORGIA
F/Y 2016 AND 2017 SALES TAX COLLECTIONS

LOCAL OPTIONS SALES TAX

		LOST + TAVT. LOST		47%		LOST + TAVT. LOST			
		+ ENERGY EXCISE		LOST	TAVT-LOST	ENERGY EXCISE	+ ENERGY EXCISE	INCREASE	
		2015-16	2016-17	2016-17	2016-17	2016-17	2016-17	(DECREASE)	PERCENT
AUGUST	1	\$ 514,431.60	\$ 439,340.59	\$ 9,947.98	\$ 23,535.34	\$ 472,823.91	\$ (41,607.69)	-8.09%	
SEPTEMBER	2	508,817.87	439,306.72	17,923.55	24,154.99	481,385.26	(27,432.61)	-5.39%	
OCTOBER	3	501,155.12	394,769.46	22,588.17	24,829.04	442,186.67	(58,968.45)	-11.77%	
NOVEMBER	4	469,462.66	448,071.92	11,828.12	23,445.27	483,345.31	13,882.65	2.96%	
DECEMBER	5	479,850.05	461,370.54	14,233.39	22,046.46	497,650.39	17,800.34	3.71%	
JANUARY	6	587,296.30	560,757.55	14,077.16	21,375.49	596,210.20	8,913.90	1.52%	
FEBRUARY	7	444,716.95	419,782.89	34,419.75	20,540.21	474,742.85	30,025.90	6.75%	
MARCH	8	468,589.41	416,951.43	2,242.76	22,720.93	441,915.12	(26,674.29)	-5.69%	
APRIL	9	518,288.56	484,766.27	48,484.82	21,083.86	554,334.95	36,046.39	6.95%	
MAY	10	511,572.04	470,591.55	33,447.26	21,981.18	526,019.99	14,447.95	2.82%	
JUNE	11	516,512.99	482,232.88	26,497.14	23,302.29	532,032.31	15,519.32	3.00%	
JULY	12	515,389.19	491,223.69	35,852.50	25,209.60	552,285.79	36,896.60	7.16%	
YEAR TO DATE		\$ 6,036,082.74	\$ 5,509,165.49	\$ 271,542.60	\$ 274,224.66	\$ 6,054,932.75	\$ 18,850.01	0.31%	

SPECIAL PURPOSE LOCAL OPTION SALES TAX

		SPLOST + TAVT SPLOST		53%		SPLOST + TAVT SPLOST			
		+ENERGY EXCISE		SPLOST	TAVT-SPLOST	ENERGY EXCISE	+ENERGY EXCISE	INCREASE	
		2015-16	2016-17	2016-17	2016-17	2016-17	2016-17	(DECREASE)	PERCENT
AUGUST	1	\$ 727,841.46	\$ 633,533.78	\$ 11,382.47	\$ 26,539.85	\$ 671,456.10	\$ (56,385.36)	-7.75%	
SEPTEMBER	2	719,813.69	633,459.71	20,508.08	27,238.60	681,206.39	(38,607.30)	-5.36%	
OCTOBER	3	708,813.37	569,172.84	25,845.32	27,998.71	623,016.87	(85,796.50)	-12.10%	
NOVEMBER	4	665,471.01	646,106.40	13,533.72	26,438.29	686,078.41	20,607.40	3.10%	
DECEMBER	5	682,724.87	665,273.30	16,285.82	24,860.90	706,420.02	23,695.15	3.47%	
JANUARY	6	829,966.43	793,265.96	16,107.05	24,104.28	833,477.29	3,510.86	0.42%	
FEBRUARY	7	628,590.55	605,301.88	39,382.97	23,162.37	667,847.22	39,256.67	6.25%	
MARCH	8	664,649.66	601,225.48	2,566.18	25,621.48	629,413.14	(35,236.52)	-5.30%	
APRIL	9	729,656.01	698,869.75	55,476.17	23,775.41	778,121.33	48,465.32	6.64%	
MAY	10	722,290.37	678,567.49	38,270.25	24,787.29	741,625.03	19,334.66	2.68%	
JUNE	11	729,303.63	695,344.85	30,317.94	26,277.07	751,939.86	22,636.23	3.10%	
JULY	12	728,829.83	708,286.87	41,022.31	28,427.84	777,737.02	48,907.19	6.71%	
YEAR TO DATE		\$ 8,537,950.88	\$ 7,928,408.31	\$ 310,698.28	\$ 309,232.09	\$ 8,548,338.68	\$ 10,387.80	0.12%	

GORDON COUNTY, GEORGIA
F/Y 2015 AND 2016 SALES TAX COLLECTIONS

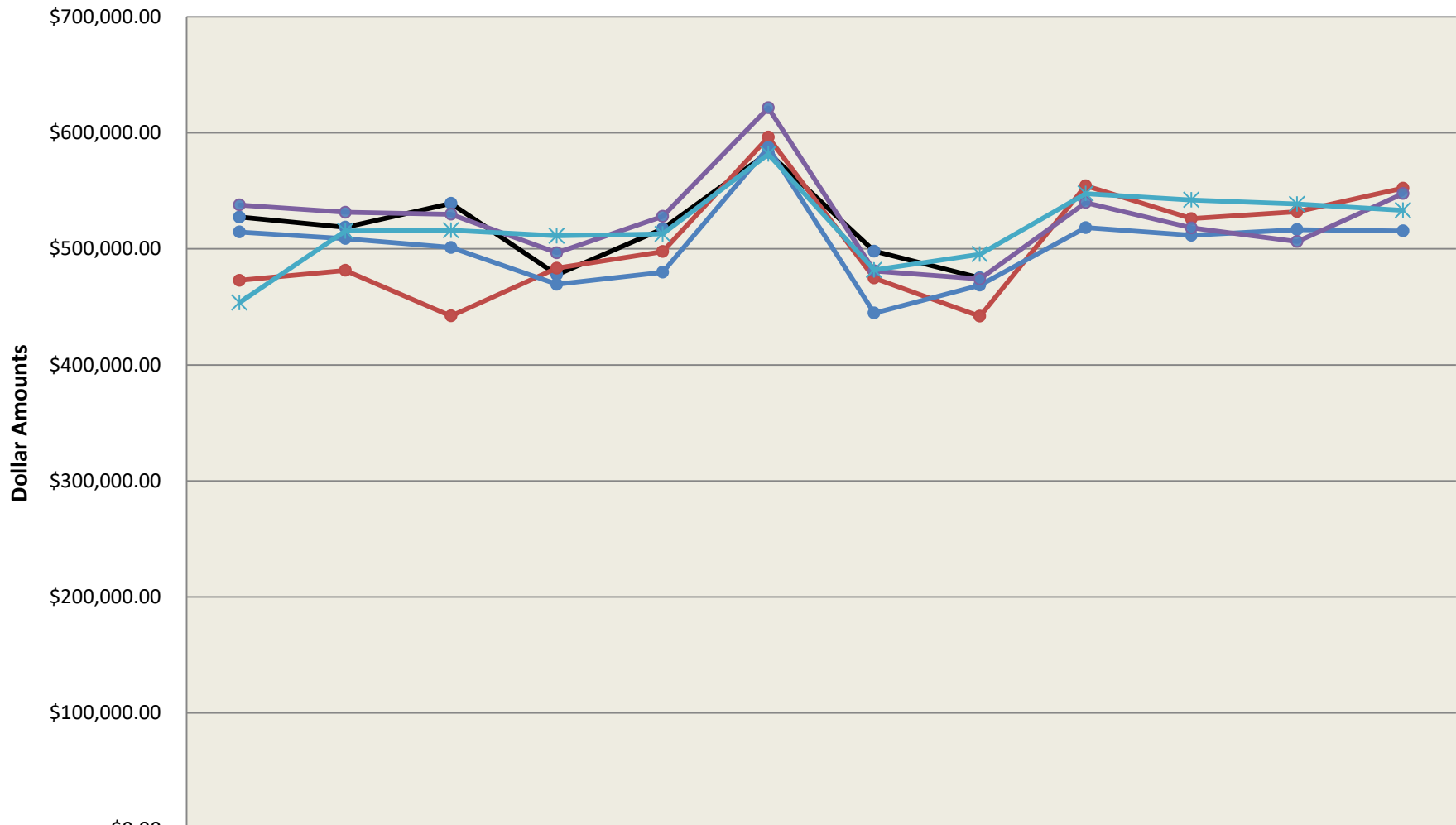
LOCAL OPTIONS SALES TAX

		LOST + TAVT. LOST		47%		LOST + TAVT. LOST			
		+ ENERGY EXCISE		LOST	TAVT-LOST	ENERGY EXCISE	+ ENERGY EXCISE	INCREASE	
		2014-15	2015-16	2015-16	2015-16	2015-16	2015-16	(DECREASE)	PERCENT
AUGUST	1	\$ 537,798.10	\$ 469,336.89	\$ 24,140.07	\$ 20,954.64	\$ 514,431.60	\$ (23,366.50)	-4.34%	
SEPTEMBER	2	531,521.53	463,830.18	24,731.54	20,256.15	508,817.87	(22,703.66)	-4.27%	
OCTOBER	3	529,751.18	456,403.45	26,959.99	17,791.68	501,155.12	(28,596.06)	-5.40%	
NOVEMBER	4	496,517.64	432,675.47	18,737.96	18,049.23	469,462.66	(27,054.98)	-5.45%	
DECEMBER	5	527,998.46	450,099.67	12,554.81	17,195.57	479,850.05	(48,148.41)	-9.12%	
JANUARY	6	621,536.12	531,420.90	40,315.63	15,559.77	587,296.30	(34,239.82)	-5.51%	
FEBRUARY	7	480,900.66	405,054.82	19,615.91	20,046.22	444,716.95	(36,183.71)	-7.52%	
MARCH	8	474,030.43	432,790.83	13,283.03	22,515.55	468,589.41	(5,441.02)	-1.15%	
APRIL	9	539,783.12	460,114.99	35,917.80	22,255.77	518,288.56	(21,494.56)	-3.98%	
MAY	10	518,004.47	461,205.71	28,863.55	21,502.78	511,572.04	(6,432.43)	-1.24%	
JUNE	11	506,312.67	465,766.31	28,160.52	22,586.16	516,512.99	10,200.32	2.01%	
JULY	12	547,555.03	468,438.38	25,251.61	21,699.20	515,389.19	(32,165.84)	-5.87%	
YEAR TO DATE		\$ 6,311,709.41	\$ 5,497,137.60	\$ 298,532.42	\$ 240,412.72	\$ 6,036,082.74	\$ (275,626.67)	-4.37%	

SPECIAL PURPOSE LOCAL OPTION SALES TAX

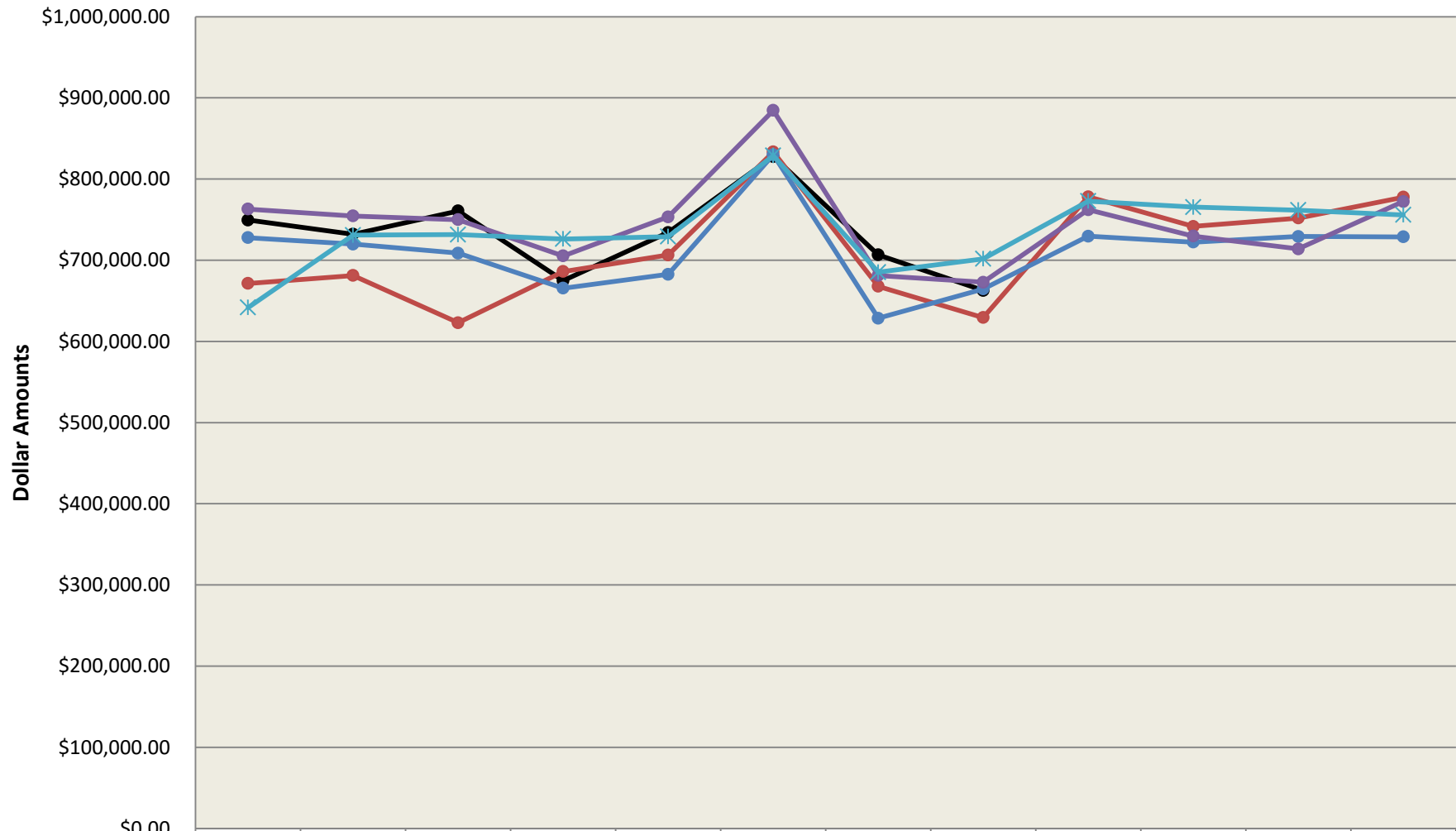
		SPLOST + TAVT SPLOST		53%		SPLOST + TAVT SPLOST			
		+ENERGY EXCISE		SPLOST	TAVT-SPLOST	ENERGY EXCISE	+ENERGY EXCISE	INCREASE	
		2014-15	2015-16	2015-16	2015-16	2015-16	2015-16	(DECREASE)	PERCENT
AUGUST	1	\$ 763,019.06	\$ 676,590.77	\$ 27,621.00	\$ 23,629.69	\$ 727,841.46	\$ (35,177.60)	-4.61%	
SEPTEMBER	2	754,492.59	668,673.88	28,297.76	22,842.05	719,813.69	(34,678.90)	-4.60%	
OCTOBER	3	749,913.78	657,902.87	30,847.55	20,062.95	708,813.37	(41,100.41)	-5.48%	
NOVEMBER	4	705,357.87	623,677.69	21,439.93	20,353.39	665,471.01	(39,886.86)	-5.65%	
DECEMBER	5	753,455.61	648,968.95	14,365.18	19,390.74	682,724.87	(70,730.74)	-9.39%	
JANUARY	6	884,623.71	766,291.24	46,129.06	17,546.13	829,966.43	(54,657.28)	-6.18%	
FEBRUARY	7	681,228.80	583,540.77	22,444.47	22,605.31	628,590.55	(52,638.25)	-7.73%	
MARCH	8	672,870.80	624,061.38	15,198.41	25,389.87	664,649.66	(8,221.14)	-1.22%	
APRIL	9	762,226.27	663,462.04	41,097.03	25,096.94	729,656.01	(32,570.26)	-4.27%	
MAY	10	729,834.07	665,016.96	33,025.59	24,247.82	722,290.37	(7,543.70)	-1.03%	
JUNE	11	713,869.69	671,612.95	32,221.17	25,469.51	729,303.63	15,433.94	2.16%	
JULY	12	772,221.40	675,467.70	28,892.81	24,469.32	728,829.83	(43,391.57)	-5.62%	
YEAR TO DATE		\$ 8,943,113.65	\$ 7,925,267.20	\$ 341,579.96	\$ 271,103.72	\$ 8,537,950.88	\$ (405,162.77)	-4.53%	

Gordon County - LOST + TAVT LOST + Energy Excise Tax Collections



	August	September	October	November	December	January	February	March	April	May	June	July
● F/Y - 6/30/2018	\$527,402.45	\$518,559.28	\$539,150.85	\$477,714.65	\$517,198.30	\$582,970.29	\$497,932.65	\$475,041.77				
● F/Y - 6/30/2017	\$472,823.91	\$481,385.26	\$442,186.67	\$483,345.31	\$497,650.39	\$596,210.20	\$474,742.85	\$441,915.12	\$554,334.95	\$526,019.99	\$532,032.31	\$552,285.79
● F/Y - 6/30/2016	\$514,431.60	\$508,817.87	\$501,155.12	\$469,462.66	\$479,850.05	\$587,296.30	\$444,716.95	\$468,589.41	\$518,288.56	\$511,572.04	\$516,512.99	\$515,389.19
● F/Y - 6/30/2015	\$537,798.10	\$531,521.53	\$529,751.18	\$496,517.64	\$527,998.46	\$621,536.12	\$480,900.66	\$474,030.43	\$539,783.12	\$518,004.47	\$506,312.67	\$547,555.03
✱ F/Y - 6/30/2014	\$453,685.90	\$515,240.93	\$515,987.22	\$511,130.61	\$512,731.24	\$581,526.42	\$481,765.50	\$495,289.77	\$547,564.27	\$542,046.69	\$538,529.83	\$533,133.27

Gordon County - SPLOST + TAVT SPLOST + Energy Excise Tax Collections



	August	September	October	November	December	January	February	March	April	May	June	July
● F/Y - 6/30/2018	\$749,403.22	\$732,095.50	\$760,648.52	\$674,792.34	\$734,097.55	\$827,742.95	\$706,669.89	\$662,781.29				
● F/Y - 6/30/2017	\$671,456.10	\$681,206.39	\$623,016.87	\$686,078.41	\$706,420.02	\$833,477.29	\$667,847.22	\$629,413.14	\$778,121.33	\$741,625.03	\$751,939.86	\$777,737.02
● F/Y - 6/30/2016	\$727,841.46	\$719,813.69	\$708,813.37	\$665,471.01	\$682,724.87	\$829,966.43	\$628,590.55	\$664,649.66	\$729,656.01	\$722,290.37	\$729,303.63	\$728,829.83
● F/Y - 6/30/2015	\$763,019.06	\$754,492.59	\$749,913.78	\$705,357.87	\$753,455.61	\$884,623.71	\$681,228.80	\$672,870.80	\$762,226.27	\$729,834.07	\$713,869.69	\$772,221.40
* F/Y - 6/30/2014	\$641,706.86	\$730,948.23	\$731,607.03	\$726,096.67	\$729,130.99	\$828,799.76	\$685,281.47	\$701,727.02	\$772,757.07	\$765,460.89	\$761,651.20	\$755,814.62

**GORDON COUNTY BOARD OF COMMISSIONERS
LOCAL OPTION SALES TAX RECEIVED-ACCRUAL BASIS**

	6/30/2010	6/30/2011	6/30/2012	6/30/2013	6/30/2014	6/30/2015	6/30/2016	6/30/2017	6/30/2018	Dollar Increase (Decrease) Over Prev. Period	Percent Increase (Decrease) Over Prev. Period
	2009-2010	2010-2011	2011-2012	2012-2013	2013-2014	2014-2015	2015-2016	2016-2017	2017-2018		
August	357,800.81	480,756.56	516,444.72	514,709.16	413,539.08	496,672.49	469,336.89	439,340.59	491,600.43	52,259.84	11.90%
September	488,828.09	479,022.56	502,271.80	527,892.54	476,012.75	492,293.35	463,830.18	439,306.72	467,395.87	28,089.15	6.39%
October	429,757.98	474,296.45	494,968.97	512,914.56	475,079.76	484,182.58	456,403.45	394,769.46	484,150.21	89,380.75	22.64%
November	499,056.91	452,315.32	445,666.33	494,729.69	475,235.56	462,175.02	432,675.47	448,071.92	431,845.44	(16,226.48)	-3.62%
December	469,877.15	471,145.49	476,130.87	482,773.42	485,868.46	504,223.02	450,099.67	461,370.54	479,292.83	17,922.29	3.88%
January	470,061.76	547,039.83	580,057.02	567,919.86	549,283.94	584,051.81	531,420.90	560,757.55	541,037.58	(19,719.97)	-3.52%
February	494,719.30	416,020.54	429,235.75	398,595.50	451,062.88	441,212.90	405,054.82	419,782.89	461,224.54	41,441.65	9.87%
March	569,241.40	476,212.79	513,923.05	534,956.63	454,131.88	439,384.44	432,790.83	416,951.43	401,768.10	(15,183.33)	-3.64%
April	488,623.66	485,260.60	536,136.86	538,337.40	490,302.97	486,873.87	460,114.99	484,766.27			
May	462,557.14	479,550.11	481,206.69	479,401.11	490,112.26	462,080.94	461,205.71	470,591.55			
June	513,295.65	483,787.91	507,590.11	481,824.31	489,180.28	453,420.65	465,766.31	482,232.88			
July	482,458.99	478,424.99	511,846.97	452,751.57	490,489.34	490,902.83	468,438.38	491,223.69			

\$ 5,726,278.84 \$ 5,723,833.15 \$ 5,995,479.14 \$ 5,986,805.75 \$ 5,740,299.16 \$ 5,797,473.90 \$ 5,497,137.60 \$ 5,509,165.49 \$ 3,758,315.00 \$ 177,963.90

Dollar Increase (Decrease) over Previous Year	\$ (149,317.38)	(\$2,445.69)	\$271,645.99	(\$8,673.39)	(\$246,506.59)	\$57,174.74	(\$300,336.30)	\$12,027.89		
Percent	-2.54%	-0.04%	4.75%	-0.14%	-4.12%	1.00%	-5.18%	0.22%		

Gordon County, Georgia

2005-SPLOST - SALES TAX RECEIVED (Effective 4-01-06- Expires 3-31-12)

ACCRUAL BASIS

2012-SPLOST - SALES TAX RECEIVED (Effective 4-01-12- Expires 3-31-18)

	<u>6/30/2010</u>	<u>6/30/2011</u>	<u>6/30/2012</u>	<u>6/30/2013</u>	<u>6/30/2014</u>	<u>6/30/2015</u>	<u>6/30/2016</u>	<u>6/30/2017</u>	<u>6/30/2018</u>	Dollar Increase (Decrease) Over Prev. Period	Percent Increase (Decrease) Over Prev. Period
	2009-2010	2010-2011	2011-2012	2012-2013	2013-2014	2014-2015	2015-2016	2016-2017	2017-2018		
August	501,553.55	686,190.00	748,318.75	745,740.20	595,871.00	716,172.77	676,590.77	633,533.78	708,863.01	75,329.23	11.89%
September	685,995.55	685,315.56	727,903.06	764,942.04	686,282.45	709,826.81	668,673.88	633,459.71	673,966.02	40,506.31	6.39%
October	603,067.68	677,624.88	716,720.29	741,417.32	684,900.54	697,997.61	657,902.87	569,172.84	698,124.08	128,951.24	22.66%
November	699,588.81	645,439.85	645,544.60	713,336.70	685,116.11	666,283.66	623,677.69	646,106.40	622,702.51	(23,403.89)	-3.62%
December	705,034.47	673,059.30	689,844.18	697,763.54	698,483.02	726,448.74	648,968.95	665,273.30	691,109.57	25,836.27	3.88%
January	659,676.55	781,455.10	840,150.94	818,706.86	791,995.88	841,929.67	766,291.24	793,265.96	780,117.49	(13,148.47)	-1.66%
February	703,816.68	602,538.44	620,883.97	575,342.08	650,320.34	636,064.77	583,540.77	605,301.88	665,066.93	59,765.05	9.87%
March	807,245.52	703,671.27	744,704.23	771,102.12	654,824.51	633,549.78	624,061.38	601,225.48	579,333.60	(21,891.88)	-3.64%
April	700,371.56	703,091.36	776,183.62	775,576.01	707,436.56	701,996.29	663,462.04	698,869.75			
May	660,509.66	694,112.54	697,298.18	691,155.37	706,231.15	666,147.17	665,016.96	678,567.49			
June	731,895.05	700,723.73	735,500.01	694,694.81	705,372.47	653,653.88	671,612.95	695,344.85			
July	688,663.92	694,055.21	741,703.19	653,876.72	707,227.20	707,730.70	675,467.70	708,286.87			
	<u>\$ 8,147,419.00</u>	<u>\$ 8,247,277.24</u>	<u>\$ 8,684,755.02</u>	<u>\$ 8,643,653.77</u>	<u>\$ 8,274,061.23</u>	<u>\$ 8,357,801.85</u>	<u>\$ 7,925,267.20</u>	<u>\$ 7,928,408.31</u>	<u>\$ 5,419,283.21</u>	<u>\$ 271,943.86</u>	

Dollar Increase

(Decrease) over

Previous Year \$ (34,121.19) \$ 99,858.24 \$ 437,477.78 \$ (41,101.25) \$ (369,592.54) \$ 83,740.62 \$ (432,534.65) \$ 3,141.11

Percent -0.42% 1.23% 5.30% -0.47% -4.28% 1.01% -5.18% 0.04%