

# **GORDON COUNTY, GEORGIA**

LOCAL OPTION AND SPECIAL PURPOSE SALES TAX COLLECTIONS

APRIL 30, 2016

**GORDON COUNTY, GEORGIA**  
F/Y 2015 AND 2016 SALES TAX COLLECTIONS

**LOCAL OPTIONS SALES TAX**

		LOST + TAVT. LOST		47%		LOST + TAVT. LOST		PERCENT	
		+ ENERGY EXCISE		LOST	TAVT-LOST	ENERGY EXCISE	+ ENERGY EXCISE		INCREASE
		2014-15	2015-16	2015-16	2015-16	2015-16	2015-16		(DECREASE)
AUGUST	1	\$ 537,798.10	\$ 469,336.89	\$ 24,140.07	\$ 20,954.64	\$ 514,431.60	\$ (23,366.50)	-4.34%	
SEPTEMBER	2	531,521.53	463,830.18	24,731.54	20,256.15	508,817.87	(22,703.66)	-4.27%	
OCTOBER	3	529,751.18	456,403.45	26,959.99	17,791.68	501,155.12	(28,596.06)	-5.40%	
NOVEMBER	4	496,517.64	432,675.47	18,737.96	18,049.23	469,462.66	(27,054.98)	-5.45%	
DECEMBER	5	527,998.46	450,099.67	12,554.81	17,195.57	479,850.05	(48,148.41)	-9.12%	
JANUARY	6	621,536.12	531,420.90	40,315.63	15,559.77	587,296.30	(34,239.82)	-5.51%	
FEBRUARY	7	480,900.66	405,054.82	19,615.91	20,046.22	444,716.95	(36,183.71)	-7.52%	
MARCH	8	474,030.43	432,790.83	13,283.03	22,515.55	468,589.41	(5,441.02)	-1.15%	
APRIL	9	539,783.12	460,114.99	35,917.80	22,255.77	518,288.56	(21,494.56)	-3.98%	
MAY	10						-		
JUNE	11						-		
JULY	12						-		
YEAR TO DATE		<u>\$ 4,739,837.24</u>	<u>\$ 4,101,727.20</u>	<u>\$ 216,256.74</u>	<u>\$ 174,624.58</u>	<u>\$ 4,492,608.52</u>	<u>\$ (247,228.72)</u>	<u>-5.22%</u>	

**SPECIAL PURPOSE LOCAL OPTION SALES TAX**

		SPLOST + TAVT SPLOST		53%		SPLOST + TAVT SPLOST		PERCENT	
		+ENERGY EXCISE		SPLOST	TAVT-SPLOST	ENERGY EXCISE	+ENERGY EXCISE		INCREASE
		2014-15	2015-16	2015-16	2015-16	2015-16	2015-16		(DECREASE)
AUGUST	1	\$ 763,019.06	\$ 676,590.77	\$ 27,621.00	\$ 23,629.69	\$ 727,841.46	\$ (35,177.60)	-4.61%	
SEPTEMBER	2	754,492.59	668,673.88	28,297.76	22,842.05	719,813.69	(34,678.90)	-4.60%	
OCTOBER	3	749,913.78	657,902.87	30,847.55	20,062.95	708,813.37	(41,100.41)	-5.48%	
NOVEMBER	4	705,357.87	623,677.69	21,439.93	20,353.39	665,471.01	(39,886.86)	-5.65%	
DECEMBER	5	753,455.61	648,968.95	14,365.18	19,390.74	682,724.87	(70,730.74)	-9.39%	
JANUARY	6	884,623.71	766,291.24	46,129.06	17,546.13	829,966.43	(54,657.28)	-6.18%	
FEBRUARY	7	681,228.80	583,540.77	22,444.47	22,605.31	628,590.55	(52,638.25)	-7.73%	
MARCH	8	672,870.80	624,061.38	15,198.41	25,389.87	664,649.66	(8,221.14)	-1.22%	
APRIL	9	762,226.27	663,462.04	41,097.03	25,096.94	729,656.01	(32,570.26)	-4.27%	
MAY	10						-		
JUNE	11						-		
JULY	12						-		
YEAR TO DATE		<u>\$ 6,727,188.49</u>	<u>\$ 5,913,169.59</u>	<u>\$ 247,440.39</u>	<u>\$ 196,917.07</u>	<u>\$ 6,357,527.05</u>	<u>\$ (369,661.44)</u>	<u>-5.50%</u>	

**GORDON COUNTY, GEORGIA**  
F/Y 2014 AND 2015 SALES TAX COLLECTIONS

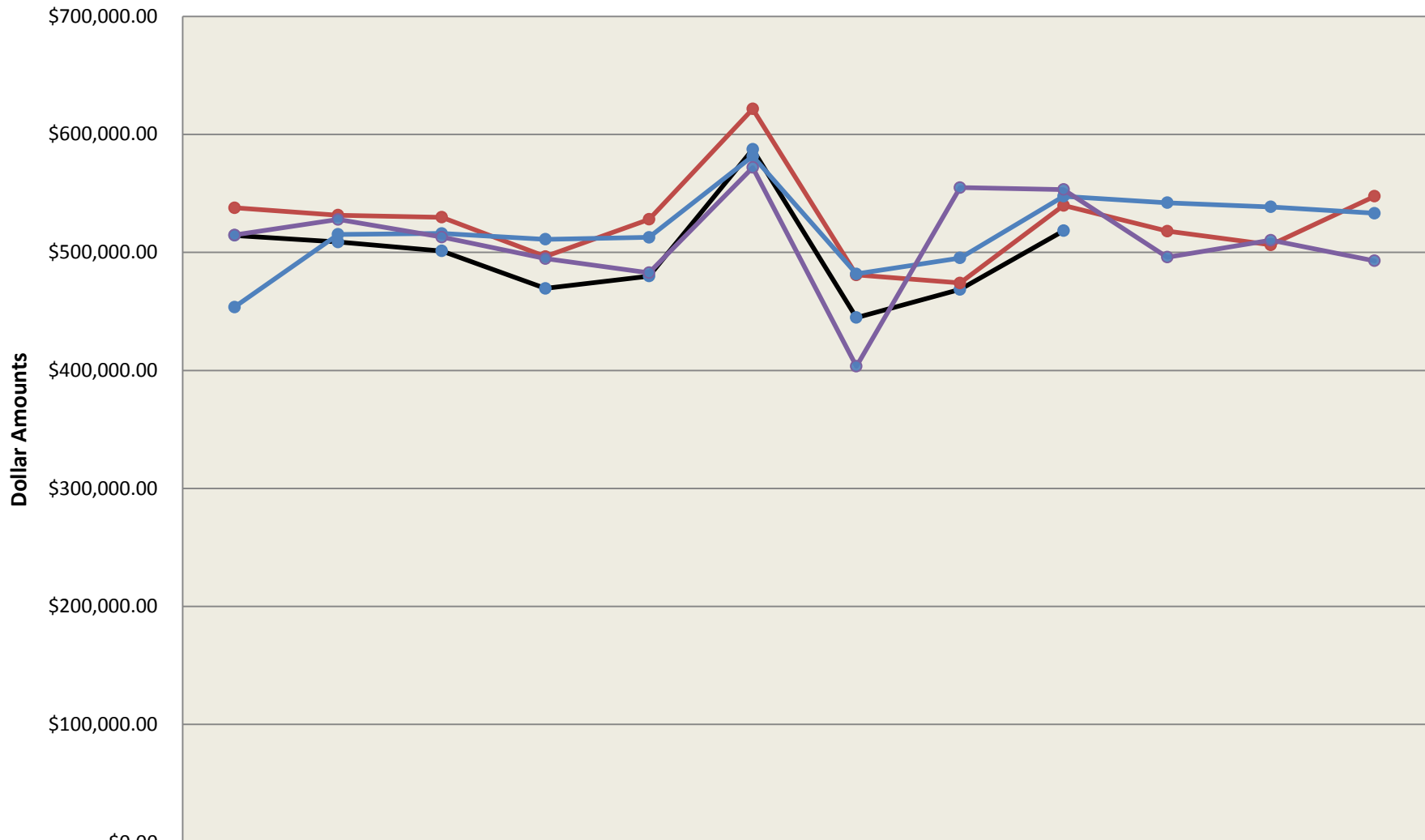
**LOCAL OPTIONS SALES TAX**

		LOST + TAVT. LOST		47%		LOST + TAVT. LOST			
		+ ENERGY EXCISE		TAVT-LOST		+ ENERGY EXCISE		INCREASE	
		2013-14		2014-15		2014-15		(DECREASE)	
								PERCENT	
AUGUST	1	\$ 453,685.90	\$ 496,672.49	\$ 28,456.24	\$ 12,669.37	\$ 537,798.10	\$ 84,112.20	18.54%	
SEPTEMBER	2	515,240.93	492,293.35	25,986.81	13,241.37	531,521.53	16,280.60	3.16%	
OCTOBER	3	515,987.22	484,182.58	32,068.08	13,500.52	529,751.18	13,763.96	2.67%	
NOVEMBER	4	511,130.61	462,175.02	21,009.63	13,332.99	496,517.64	(14,612.97)	-2.86%	
DECEMBER	5	512,731.24	504,223.02	11,868.11	11,907.33	527,998.46	15,267.22	2.98%	
JANUARY	6	581,526.42	584,051.81	25,669.56	11,814.75	621,536.12	40,009.70	6.88%	
FEBRUARY	7	481,765.50	441,212.90	24,776.53	14,911.23	480,900.66	(864.84)	-0.18%	
MARCH	8	495,289.77	439,384.44	15,245.37	19,400.62	474,030.43	(21,259.34)	-4.29%	
APRIL	9	547,564.27	486,873.87	34,248.51	18,660.74	539,783.12	(7,781.15)	-1.42%	
MAY	10	542,046.69	462,080.94	37,745.40	18,178.13	518,004.47	(24,042.22)	-4.44%	
JUNE	11	538,529.83	453,420.65	34,564.49	18,327.53	506,312.67	(32,217.16)	-5.98%	
JULY	12	533,133.27	490,902.83	36,663.74	19,988.46	547,555.03	14,421.76	2.71%	
YEAR TO DATE		\$ 6,228,631.65	\$ 5,797,473.90	\$ 328,302.47	\$ 185,933.04	\$ 6,311,709.41	\$ 83,077.76	1.33%	

**SPECIAL PURPOSE LOCAL OPTION SALES TAX**

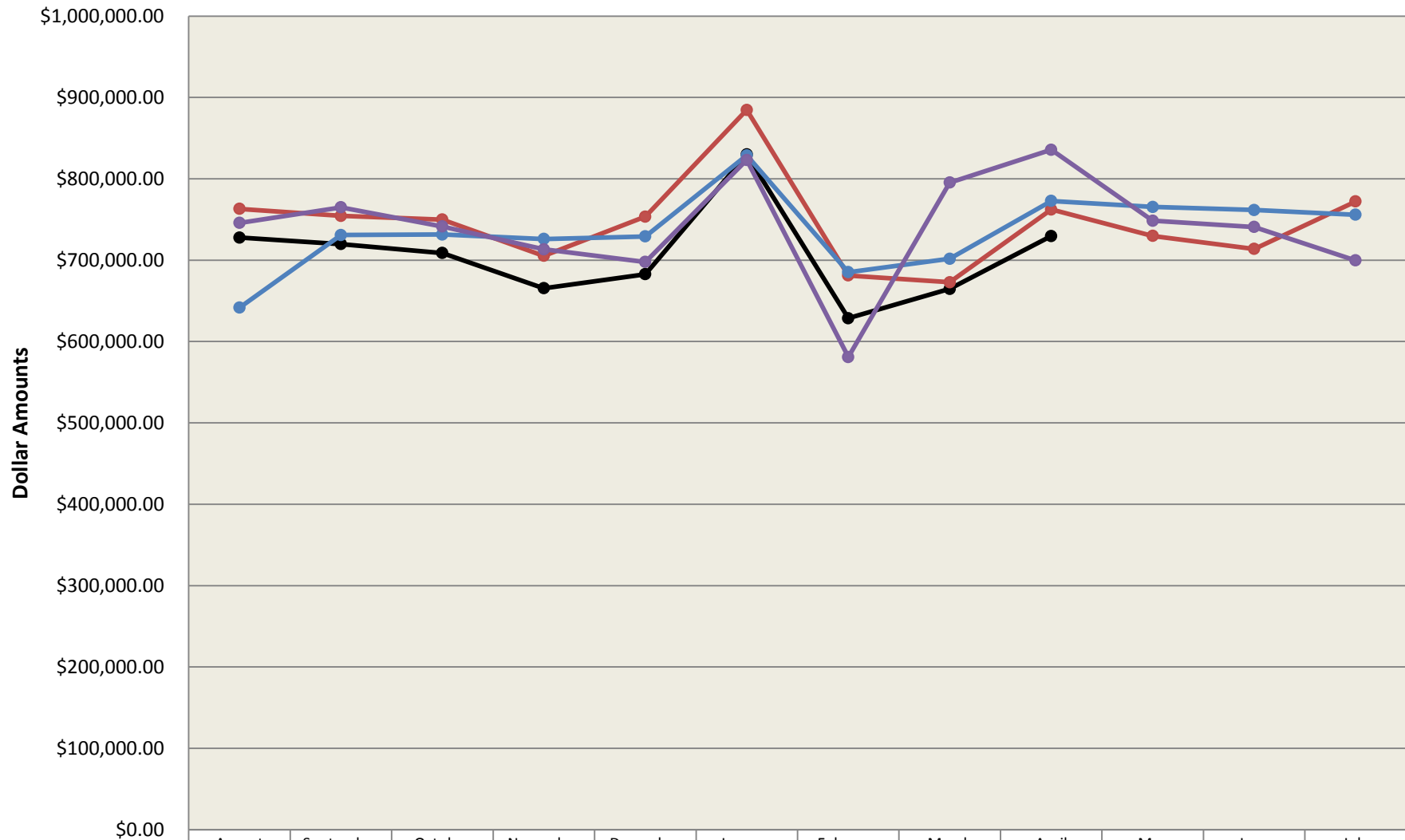
		SPLOST + TAVT SPLOST		53%		SPLOST + TAVT SPLOST			
		+ENERGY EXCISE		TAVT-SPLOST		+ENERGY EXCISE		INCREASE	
		2013-14		2014-15		2014-15		(DECREASE)	
								PERCENT	
AUGUST	1	\$ 641,706.86	\$ 716,172.77	\$ 32,559.55	\$ 14,286.74	\$ 763,019.06	\$ 121,312.20	18.90%	
SEPTEMBER	2	730,948.23	709,826.81	29,734.02	14,931.76	754,492.59	23,544.36	3.22%	
OCTOBER	3	731,607.03	697,997.61	36,692.19	15,223.98	749,913.78	18,306.75	2.50%	
NOVEMBER	4	726,096.67	666,283.66	24,039.14	15,035.07	705,357.87	(20,738.80)	-2.86%	
DECEMBER	5	729,130.99	726,448.74	13,579.46	13,427.41	753,455.61	24,324.62	3.34%	
JANUARY	6	828,799.76	841,929.67	29,371.03	13,323.01	884,623.71	55,823.95	6.74%	
FEBRUARY	7	685,281.47	636,064.77	28,349.23	16,814.80	681,228.80	(4,052.67)	-0.59%	
MARCH	8	701,727.02	633,549.78	17,443.72	21,877.30	672,870.80	(28,856.22)	-4.11%	
APRIL	9	772,757.07	701,996.29	39,187.02	21,042.96	762,226.27	(10,530.80)	-1.36%	
MAY	10	765,460.89	666,147.17	43,188.16	20,498.74	729,834.07	(35,626.82)	-4.65%	
JUNE	11	761,651.20	653,653.88	39,548.59	20,667.22	713,869.69	(47,781.51)	-6.27%	
JULY	12	755,814.62	707,730.70	41,950.53	22,540.17	772,221.40	16,406.78	2.17%	
YEAR TO DATE		\$ 8,830,981.81	\$ 8,357,801.85	\$ 375,642.64	\$ 209,669.16	\$ 8,943,113.65	\$ 112,131.84	1.27%	

## Gordon County - LOST + TAVT LOST + Energy Excise Tax Collections



	August	September	October	November	December	January	February	March	April	May	June	July
— F/Y - 6/30/2016	\$514,431.60	\$508,817.87	\$501,155.12	\$469,462.66	\$479,850.05	\$587,296.30	\$444,716.95	\$468,589.41	\$518,288.56			
— F/Y - 6/30/2015	\$537,798.10	\$531,521.53	\$529,751.18	\$496,517.64	\$527,998.46	\$621,536.12	\$480,900.66	\$474,030.43	\$539,783.12	\$518,004.47	\$506,312.67	\$547,555.03
— F/Y - 6/30/2014	\$453,685.90	\$515,240.93	\$515,987.22	\$511,130.61	\$512,731.24	\$581,526.42	\$481,765.50	\$495,289.77	\$547,564.27	\$542,046.69	\$538,529.83	\$533,133.27
— F/Y - 6/30/2013	\$514,709.16	\$527,892.54	\$512,914.56	\$494,729.69	\$482,773.42	\$571,889.47	\$403,482.29	\$554,939.81	\$553,264.59	\$495,959.57	\$510,350.63	\$492,898.60

## Gordon County - SPLOST + TAVT SPLOST + Energy Excise Tax Collections



	August	September	October	November	December	January	February	March	April	May	June	July
● F/Y - 6/30/2016	\$727,841.46	\$719,813.69	\$708,813.37	\$665,471.01	\$682,724.87	\$829,966.43	\$628,590.55	\$664,649.66	\$729,656.01			
● F/Y - 6/30/2015	\$763,019.06	\$754,492.59	\$749,913.78	\$705,357.87	\$753,455.61	\$884,623.71	\$681,228.80	\$672,870.80	\$762,226.27	\$729,834.07	\$713,869.69	\$772,221.40
● F/Y - 6/30/2014	\$641,706.86	\$730,948.23	\$731,607.03	\$726,096.67	\$729,130.99	\$828,799.76	\$685,281.47	\$701,727.02	\$772,757.07	\$765,460.89	\$761,651.20	\$755,814.62
● F/Y - 6/30/2013	\$745,740.20	\$764,942.04	\$741,417.32	\$713,336.70	\$697,763.54	\$823,183.22	\$580,852.71	\$795,379.57	\$835,741.62	\$748,406.87	\$740,824.54	\$699,712.58

**GORDON COUNTY BOARD OF COMMISSIONERS  
LOCAL OPTION SALES TAX RECEIVED-ACCRUAL BASIS**

	<b>6/30/2009</b>	<b>6/30/2010</b>	<b>6/30/2011</b>	<b>6/30/2012</b>	<b>6/30/2013</b>	<b>6/30/2014</b>	<b>6/30/2015</b>	<b>6/30/2016</b>	Dollar Increase (Decrease) Over Prev. Period	Percent Increase (Decrease) Over Prev. Period
	2008-2009	2009-2010	2010-2011	2011-2012	2012-2013	2013-2014	2014-2015	2015-2016		
August	160,751.09	357,800.81	480,756.56	516,444.72	514,709.16	413,539.08	496,672.49	469,336.89	(27,335.60)	-5.50%
September	588,837.55	488,828.09	479,022.56	502,271.80	527,892.54	476,012.75	492,293.35	463,830.18	(28,463.17)	-5.78%
October	598,830.30	429,757.98	474,296.45	494,968.97	512,914.56	475,079.76	484,182.58	456,403.45	(27,779.13)	-5.74%
November	596,764.56	499,056.91	452,315.32	445,666.33	494,729.69	475,235.56	462,175.02	432,675.47	(29,499.55)	-6.38%
December	521,465.86	469,877.15	471,145.49	476,130.87	482,773.42	485,868.46	504,223.02	450,099.67	(54,123.35)	-10.73%
January	440,916.68	470,061.76	547,039.83	580,057.02	567,919.86	549,283.94	584,051.81	531,420.90	(52,630.91)	-9.01%
February	646,782.21	494,719.30	416,020.54	429,235.75	398,595.50	451,062.88	441,212.90	405,054.82	(36,158.08)	-8.20%
March	479,466.51	569,241.40	476,212.79	513,923.05	534,956.63	454,131.88	439,384.44	432,790.83	(6,593.61)	-1.50%
April	355,192.90	488,623.66	485,260.60	536,136.86	538,337.40	490,302.97	486,873.87	460,114.99	(26,758.88)	-5.50%
May	643,057.17	462,557.14	479,550.11	481,206.69	479,401.11	490,112.26	462,080.94			
June	403,436.59	513,295.65	483,787.91	507,590.11	481,824.31	489,180.28	453,420.65			
July	440,094.80	482,458.99	478,424.99	511,846.97	452,751.57	490,489.34	490,902.83			
	<b>\$5,875,596.22</b>	<b>\$5,726,278.84</b>	<b>\$5,723,833.15</b>	<b>\$5,995,479.14</b>	<b>\$5,986,805.75</b>	<b>\$5,740,299.16</b>	<b>\$5,797,473.90</b>	<b>\$4,101,727.20</b>	<b>\$ (289,342.28)</b>	

Dollar Increase  
(Decrease) over

Previous Year **\$ (941,104.95)** **\$ (149,317.38)** **(\$2,445.69)** **\$271,645.99** **(\$8,673.39)** **(\$246,506.59)** **\$57,174.74**

Percent **-13.81%** **-2.54%** **-0.04%** **4.75%** **-0.14%** **-4.12%** **1.00%**

**Gordon County, Georgia**

**2005-SPLOST - SALES TAX RECEIVED (Effective 4-01-06- Expires 3-31-12)**

**ACCRUAL BASIS**

**2012-SPLOST - SALES TAX RECEIVED (Effective 4-01-12- Expires 3-31-18)**

	<u>6/30/2009</u>	<u>6/30/2010</u>	<u>6/30/2011</u>	<u>6/30/2012</u>	<u>6/30/2013</u>	<u>6/30/2014</u>	<u>6/30/2015</u>	<u>6/30/2016</u>	Dollar Increase (Decrease) Over Prev. Period	Percent Increase (Decrease) Over Prev. Period
	2008-2009	2009-2010	2010-2011	2011-2012	2012-2013	2013-2014	2014-2015	2015-2016		
August	225,335.65	501,553.55	686,190.00	748,318.75	745,740.20	595,871.00	716,172.77	676,590.77	(39,582.00)	-5.53%
September	811,607.19	685,995.55	685,315.56	727,903.06	764,942.04	686,282.45	709,826.81	668,673.88	(41,152.93)	-5.80%
October	791,439.88	603,067.68	677,624.88	716,720.29	741,417.32	684,900.54	697,997.61	657,902.87	(40,094.74)	-5.74%
November	821,451.58	699,588.81	645,439.85	645,544.60	713,336.70	685,116.11	666,283.66	623,677.69	(42,605.97)	-6.39%
December	718,910.41	705,034.47	673,059.30	689,844.18	697,763.54	698,483.02	726,448.74	648,968.95	(77,479.79)	-10.67%
January	609,215.79	659,676.55	781,455.10	840,150.94	818,706.86	791,995.88	841,929.67	766,291.24	(75,638.43)	-8.98%
February	910,506.88	703,816.68	602,538.44	620,883.97	575,342.08	650,320.34	636,064.77	583,540.77	(52,524.00)	-8.26%
March	709,675.76	807,245.52	703,671.27	744,704.23	771,102.12	654,824.51	633,549.78	624,061.38	(9,488.40)	-1.50%
April	498,124.64	700,371.56	703,091.36	776,183.62	775,576.01	707,436.56	701,996.29	663,462.04	(38,534.25)	-5.49%
May	902,671.61	660,509.66	694,112.54	697,298.18	691,155.37	706,231.15	666,147.17			
June	565,604.01	731,895.05	700,723.73	735,500.01	694,694.81	705,372.47	653,653.88			
July	616,996.79	688,663.92	694,055.21	741,703.19	653,876.72	707,227.20	707,730.70			
	<u>\$ 8,181,540.19</u>	<u>\$8,147,419.00</u>	<u>\$8,247,277.24</u>	<u>\$8,684,755.02</u>	<u>\$8,643,653.77</u>	<u>\$8,274,061.23</u>	<u>\$8,357,801.85</u>	<u>\$5,913,169.59</u>	<u>\$ (417,100.51)</u>	

Dollar Increase

(Decrease) over

Previous Year \$ (1,206,378.26) \$ (34,121.19) \$ 99,858.24 \$ 437,477.78 \$ (41,101.25) \$ (369,592.54) \$ 83,740.62

Percent -12.85% -0.42% 1.23% 5.30% -0.47% -4.28% 1.01%