

GORDON COUNTY, GEORGIA

LOCAL OPTION AND SPECIAL PURPOSE SALES TAX COLLECTIONS

DECEMBER 31, 2015

GORDON COUNTY, GEORGIA
F/Y 2015 AND 2016 SALES TAX COLLECTIONS

LOCAL OPTIONS SALES TAX

		LOST + TAVT. LOST		47%		LOST + TAVT. LOST		INCREASE (DECREASE)	PERCENT
		+ ENERGY EXCISE		LOST	TAVT-LOST	ENERGY EXCISE	+ ENERGY EXCISE		
		2014-15	2015-16	2015-16	2015-16	2015-16	2015-16		
AUGUST	1	\$ 537,798.10	\$ 469,336.89	\$ 24,140.07	\$ 20,954.64	\$ 514,431.60	\$ (23,366.50)	-4.34%	
SEPTEMBER	2	531,521.53	463,830.18	24,731.54	20,256.15	508,817.87	(22,703.66)	-4.27%	
OCTOBER	3	529,751.18	456,403.45	26,959.99	17,791.68	501,155.12	(28,596.06)	-5.40%	
NOVEMBER	4	496,517.64	432,675.47	18,737.96	18,049.23	469,462.66	(27,054.98)	-5.45%	
DECEMBER	5	527,998.46	450,099.67	12,554.81	17,195.57	479,850.05	(48,148.41)	-9.12%	
JANUARY	6						-		
FEBRUARY	7						-		
MARCH	8						-		
APRIL	9						-		
MAY	10						-		
JUNE	11						-		
JULY	12						-		
YEAR TO DATE		<u>\$ 2,623,586.91</u>	<u>\$ 2,272,345.66</u>	<u>\$ 107,124.37</u>	<u>\$ 94,247.27</u>	<u>\$ 2,473,717.30</u>	<u>\$ (149,869.61)</u>	<u>-5.71%</u>	

SPECIAL PURPOSE LOCAL OPTION SALES TAX

		SPLOST + TAVT SPLOST		53%		SPLOST + TAVT SPLOST		INCREASE (DECREASE)	PERCENT
		+ENERGY EXCISE		SPLOST	TAVT-SPLOST	ENERGY EXCISE	+ENERGY EXCISE		
		2014-15	2015-16	2015-16	2015-16	2015-16	2015-16		
AUGUST	1	\$ 763,019.06	\$ 676,590.77	\$ 27,621.00	\$ 23,629.69	\$ 727,841.46	\$ (35,177.60)	-4.61%	
SEPTEMBER	2	754,492.59	668,673.88	28,297.76	22,842.05	719,813.69	(34,678.90)	-4.60%	
OCTOBER	3	749,913.78	657,902.87	30,847.55	20,062.95	708,813.37	(41,100.41)	-5.48%	
NOVEMBER	4	705,357.87	623,677.69	21,439.93	20,353.39	665,471.01	(39,886.86)	-5.65%	
DECEMBER	5	753,455.61	648,968.95	14,365.18	19,390.74	682,724.87	(70,730.74)	-9.39%	
JANUARY	6						-		
FEBRUARY	7						-		
MARCH	8						-		
APRIL	9						-		
MAY	10						-		
JUNE	11						-		
JULY	12						-		
YEAR TO DATE		<u>\$ 3,726,238.91</u>	<u>\$ 3,275,814.16</u>	<u>\$ 122,571.42</u>	<u>\$ 106,278.82</u>	<u>\$ 3,504,664.40</u>	<u>\$ (221,574.51)</u>	<u>-5.95%</u>	

GORDON COUNTY, GEORGIA
F/Y 2014 AND 2015 SALES TAX COLLECTIONS

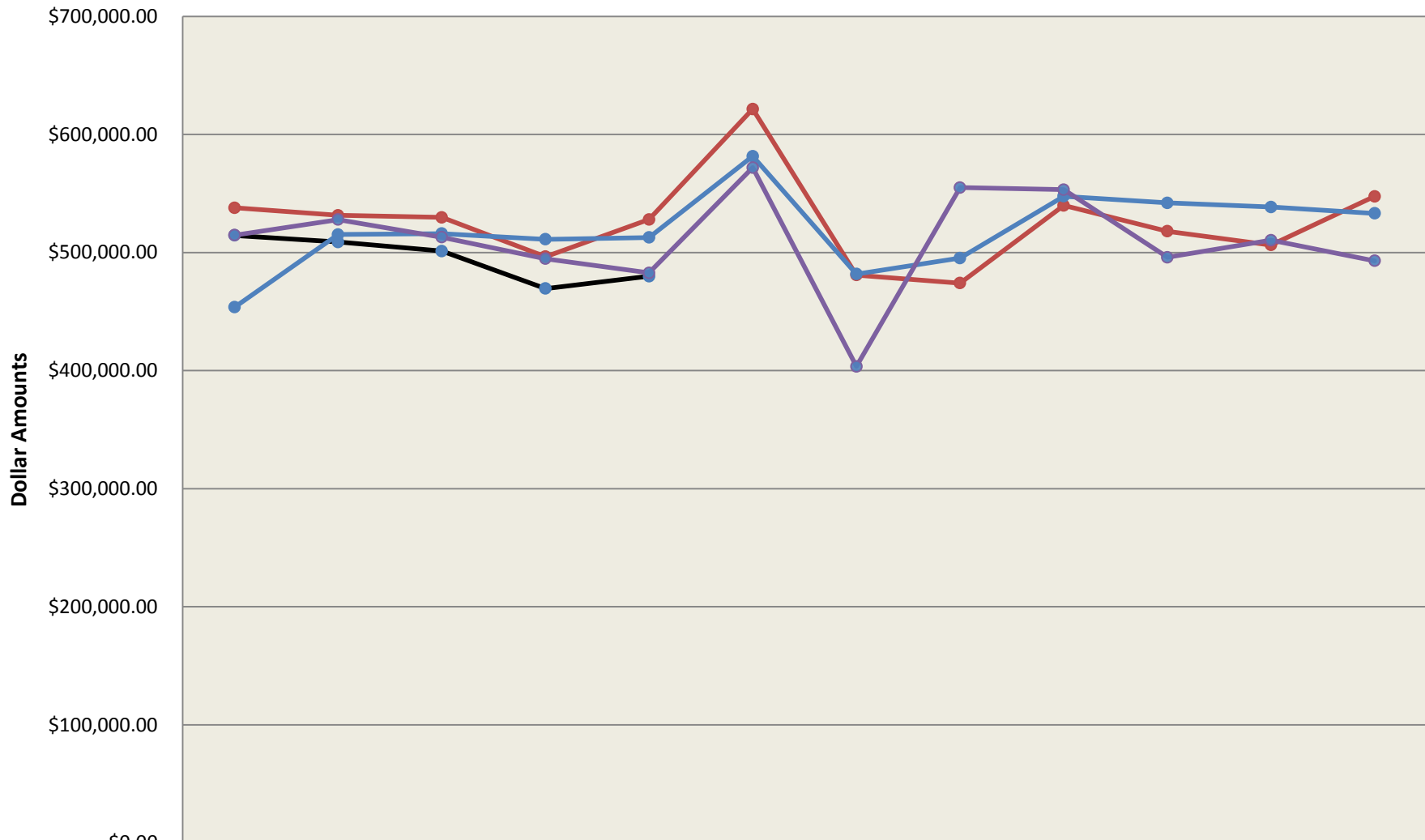
LOCAL OPTIONS SALES TAX

		LOST + TAVT. LOST		47%		LOST + TAVT. LOST			
		+ ENERGY EXCISE		TAVT-LOST		+ ENERGY EXCISE		INCREASE	
		2013-14		2014-15		2014-15		(DECREASE)	
								PERCENT	
AUGUST	1	\$ 453,685.90	\$ 496,672.49	\$ 28,456.24	\$ 12,669.37	\$ 537,798.10	\$ 84,112.20	18.54%	
SEPTEMBER	2	515,240.93	492,293.35	25,986.81	13,241.37	531,521.53	16,280.60	3.16%	
OCTOBER	3	515,987.22	484,182.58	32,068.08	13,500.52	529,751.18	13,763.96	2.67%	
NOVEMBER	4	511,130.61	462,175.02	21,009.63	13,332.99	496,517.64	(14,612.97)	-2.86%	
DECEMBER	5	512,731.24	504,223.02	11,868.11	11,907.33	527,998.46	15,267.22	2.98%	
JANUARY	6	581,526.42	584,051.81	25,669.56	11,814.75	621,536.12	40,009.70	6.88%	
FEBRUARY	7	481,765.50	441,212.90	24,776.53	14,911.23	480,900.66	(864.84)	-0.18%	
MARCH	8	495,289.77	439,384.44	15,245.37	19,400.62	474,030.43	(21,259.34)	-4.29%	
APRIL	9	547,564.27	486,873.87	34,248.51	18,660.74	539,783.12	(7,781.15)	-1.42%	
MAY	10	542,046.69	462,080.94	37,745.40	18,178.13	518,004.47	(24,042.22)	-4.44%	
JUNE	11	538,529.83	453,420.65	34,564.49	18,327.53	506,312.67	(32,217.16)	-5.98%	
JULY	12	533,133.27	490,902.83	36,663.74	19,988.46	547,555.03	14,421.76	2.71%	
YEAR TO DATE		\$ 6,228,631.65	\$ 5,797,473.90	\$ 328,302.47	\$ 185,933.04	\$ 6,311,709.41	\$ 83,077.76	1.33%	

SPECIAL PURPOSE LOCAL OPTION SALES TAX

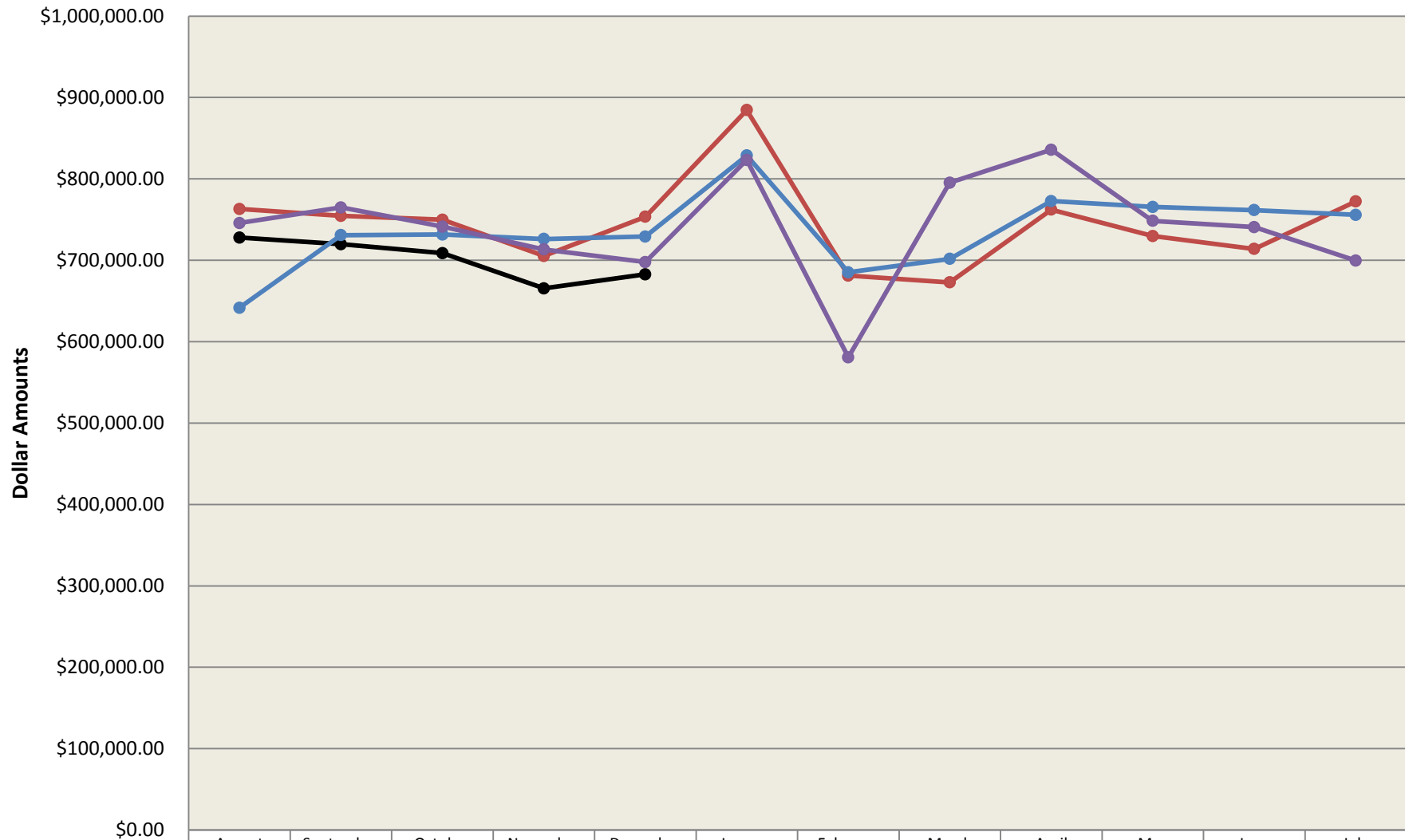
		SPLOST + TAVT SPLOST		53%		SPLOST + TAVT SPLOST			
		+ENERGY EXCISE		TAVT-SPLOST		+ENERGY EXCISE		INCREASE	
		2013-14		2014-15		2014-15		(DECREASE)	
								PERCENT	
AUGUST	1	\$ 641,706.86	\$ 716,172.77	\$ 32,559.55	\$ 14,286.74	\$ 763,019.06	\$ 121,312.20	18.90%	
SEPTEMBER	2	730,948.23	709,826.81	29,734.02	14,931.76	754,492.59	23,544.36	3.22%	
OCTOBER	3	731,607.03	697,997.61	36,692.19	15,223.98	749,913.78	18,306.75	2.50%	
NOVEMBER	4	726,096.67	666,283.66	24,039.14	15,035.07	705,357.87	(20,738.80)	-2.86%	
DECEMBER	5	729,130.99	726,448.74	13,579.46	13,427.41	753,455.61	24,324.62	3.34%	
JANUARY	6	828,799.76	841,929.67	29,371.03	13,323.01	884,623.71	55,823.95	6.74%	
FEBRUARY	7	685,281.47	636,064.77	28,349.23	16,814.80	681,228.80	(4,052.67)	-0.59%	
MARCH	8	701,727.02	633,549.78	17,443.72	21,877.30	672,870.80	(28,856.22)	-4.11%	
APRIL	9	772,757.07	701,996.29	39,187.02	21,042.96	762,226.27	(10,530.80)	-1.36%	
MAY	10	765,460.89	666,147.17	43,188.16	20,498.74	729,834.07	(35,626.82)	-4.65%	
JUNE	11	761,651.20	653,653.88	39,548.59	20,667.22	713,869.69	(47,781.51)	-6.27%	
JULY	12	755,814.62	707,730.70	41,950.53	22,540.17	772,221.40	16,406.78	2.17%	
YEAR TO DATE		\$ 8,830,981.81	\$ 8,357,801.85	\$ 375,642.64	\$ 209,669.16	\$ 8,943,113.65	\$ 112,131.84	1.27%	

Gordon County - LOST + TAVT LOST + Energy Excise Tax Collections



	August	September	October	November	December	January	February	March	April	May	June	July
— F/Y - 6/30/2016	\$514,431.60	\$508,817.87	\$501,155.12	\$469,462.66	\$479,850.05							
— F/Y - 6/30/2015	\$537,798.10	\$531,521.53	\$529,751.18	\$496,517.64	\$527,998.46	\$621,536.12	\$480,900.66	\$474,030.43	\$539,783.12	\$518,004.47	\$506,312.67	\$547,555.03
— F/Y - 6/30/2014	\$453,685.90	\$515,240.93	\$515,987.22	\$511,130.61	\$512,731.24	\$581,526.42	\$481,765.50	\$495,289.77	\$547,564.27	\$542,046.69	\$538,529.83	\$533,133.27
— F/Y - 6/30/2013	\$514,709.16	\$527,892.54	\$512,914.56	\$494,729.69	\$482,773.42	\$571,889.47	\$403,482.29	\$554,939.81	\$553,264.59	\$495,959.57	\$510,350.63	\$492,898.60

Gordon County - SPLOST + TAVT SPLOST + Energy Excise Tax Collections



	August	September	October	November	December	January	February	March	April	May	June	July
● F/Y - 6/30/2016	\$727,841.46	\$719,813.69	\$708,813.37	\$665,471.01	\$682,724.87							
● F/Y - 6/30/2015	\$763,019.06	\$754,492.59	\$749,913.78	\$705,357.87	\$753,455.61	\$884,623.71	\$681,228.80	\$672,870.80	\$762,226.27	\$729,834.07	\$713,869.69	\$772,221.40
● F/Y - 6/30/2014	\$641,706.86	\$730,948.23	\$731,607.03	\$726,096.67	\$729,130.99	\$828,799.76	\$685,281.47	\$701,727.02	\$772,757.07	\$765,460.89	\$761,651.20	\$755,814.62
● F/Y - 6/30/2013	\$745,740.20	\$764,942.04	\$741,417.32	\$713,336.70	\$697,763.54	\$823,183.22	\$580,852.71	\$795,379.57	\$835,741.62	\$748,406.87	\$740,824.54	\$699,712.58

**GORDON COUNTY BOARD OF COMMISSIONERS
LOCAL OPTION SALES TAX RECEIVED-ACCRUAL BASIS**

	6/30/2009	6/30/2010	6/30/2011	6/30/2012	6/30/2013	6/30/2014	6/30/2015	6/30/2016	Dollar Increase (Decrease) Over Prev. Period	Percent Increase (Decrease) Over Prev. Period
	2008-2009	2009-2010	2010-2011	2011-2012	2012-2013	2013-2014	2014-2015	2015-2016		
August	160,751.09	357,800.81	480,756.56	516,444.72	514,709.16	413,539.08	496,672.49	469,336.89	(27,335.60)	-5.50%
September	588,837.55	488,828.09	479,022.56	502,271.80	527,892.54	476,012.75	492,293.35	463,830.18	(28,463.17)	-5.78%
October	598,830.30	429,757.98	474,296.45	494,968.97	512,914.56	475,079.76	484,182.58	456,403.45	(27,779.13)	-5.74%
November	596,764.56	499,056.91	452,315.32	445,666.33	494,729.69	475,235.56	462,175.02	432,675.47	(29,499.55)	-6.38%
December	521,465.86	469,877.15	471,145.49	476,130.87	482,773.42	485,868.46	504,223.02	450,099.67	(54,123.35)	-10.73%
January	440,916.68	470,061.76	547,039.83	580,057.02	567,919.86	549,283.94	584,051.81			
February	646,782.21	494,719.30	416,020.54	429,235.75	398,595.50	451,062.88	441,212.90			
March	479,466.51	569,241.40	476,212.79	513,923.05	534,956.63	454,131.88	439,384.44			
April	355,192.90	488,623.66	485,260.60	536,136.86	538,337.40	490,302.97	486,873.87			
May	643,057.17	462,557.14	479,550.11	481,206.69	479,401.11	490,112.26	462,080.94			
June	403,436.59	513,295.65	483,787.91	507,590.11	481,824.31	489,180.28	453,420.65			
July	440,094.80	482,458.99	478,424.99	511,846.97	452,751.57	490,489.34	490,902.83			
	\$5,875,596.22	\$5,726,278.84	\$5,723,833.15	\$5,995,479.14	\$5,986,805.75	\$5,740,299.16	\$5,797,473.90	\$2,272,345.66	\$ (167,200.80)	
Dollar Increase (Decrease) over Previous Year	\$ (941,104.95)	\$ (149,317.38)	(\$2,445.69)	\$271,645.99	(\$8,673.39)	(\$246,506.59)	\$57,174.74			
Percent	-13.81%	-2.54%	-0.04%	4.75%	-0.14%	-4.12%	1.00%			

Gordon County, Georgia

2005-SPLOST - SALES TAX RECEIVED (Effective 4-01-06- Expires 3-31-12)

ACCRUAL BASIS

2012-SPLOST - SALES TAX RECEIVED (Effective 4-01-12- Expires 3-31-18)

	<u>6/30/2009</u>	<u>6/30/2010</u>	<u>6/30/2011</u>	<u>6/30/2012</u>	<u>6/30/2013</u>	<u>6/30/2014</u>	<u>6/30/2015</u>	<u>6/30/2016</u>	Dollar Increase (Decrease) Over Prev. Period	Percent Increase (Decrease) Over Prev. Period
	2008-2009	2009-2010	2010-2011	2011-2012	2012-2013	2013-2014	2014-2015	2015-2016		
August	225,335.65	501,553.55	686,190.00	748,318.75	745,740.20	595,871.00	716,172.77	676,590.77	(39,582.00)	-5.53%
September	811,607.19	685,995.55	685,315.56	727,903.06	764,942.04	686,282.45	709,826.81	668,673.88	(41,152.93)	-5.80%
October	791,439.88	603,067.68	677,624.88	716,720.29	741,417.32	684,900.54	697,997.61	657,902.87	(40,094.74)	-5.74%
November	821,451.58	699,588.81	645,439.85	645,544.60	713,336.70	685,116.11	666,283.66	623,677.69	(42,605.97)	-6.39%
December	718,910.41	705,034.47	673,059.30	689,844.18	697,763.54	698,483.02	726,448.74	648,968.95	(77,479.79)	-10.67%
January	609,215.79	659,676.55	781,455.10	840,150.94	818,706.86	791,995.88	841,929.67			
February	910,506.88	703,816.68	602,538.44	620,883.97	575,342.08	650,320.34	636,064.77			
March	709,675.76	807,245.52	703,671.27	744,704.23	771,102.12	654,824.51	633,549.78			
April	498,124.64	700,371.56	703,091.36	776,183.62	775,576.01	707,436.56	701,996.29			
May	902,671.61	660,509.66	694,112.54	697,298.18	691,155.37	706,231.15	666,147.17			
June	565,604.01	731,895.05	700,723.73	735,500.01	694,694.81	705,372.47	653,653.88			
July	616,996.79	688,663.92	694,055.21	741,703.19	653,876.72	707,227.20	707,730.70			
	<u>\$ 8,181,540.19</u>	<u>\$8,147,419.00</u>	<u>\$8,247,277.24</u>	<u>\$8,684,755.02</u>	<u>\$8,643,653.77</u>	<u>\$8,274,061.23</u>	<u>\$8,357,801.85</u>	<u>\$3,275,814.16</u>	<u>\$ (240,915.43)</u>	

Dollar Increase
(Decrease) over

Previous Year \$ (1,206,378.26) \$ (34,121.19) \$ 99,858.24 \$ 437,477.78 \$ (41,101.25) \$ (369,592.54) \$ 83,740.62

Percent -12.85% -0.42% 1.23% 5.30% -0.47% -4.28% 1.01%